

TENANTS' PERSPECTIVE



ALHOSN LOGISTICS
الحصن اللوجستية

وخدمات المستودعات ش.م.ح FZS Warehousing Services &

Version 1.2022

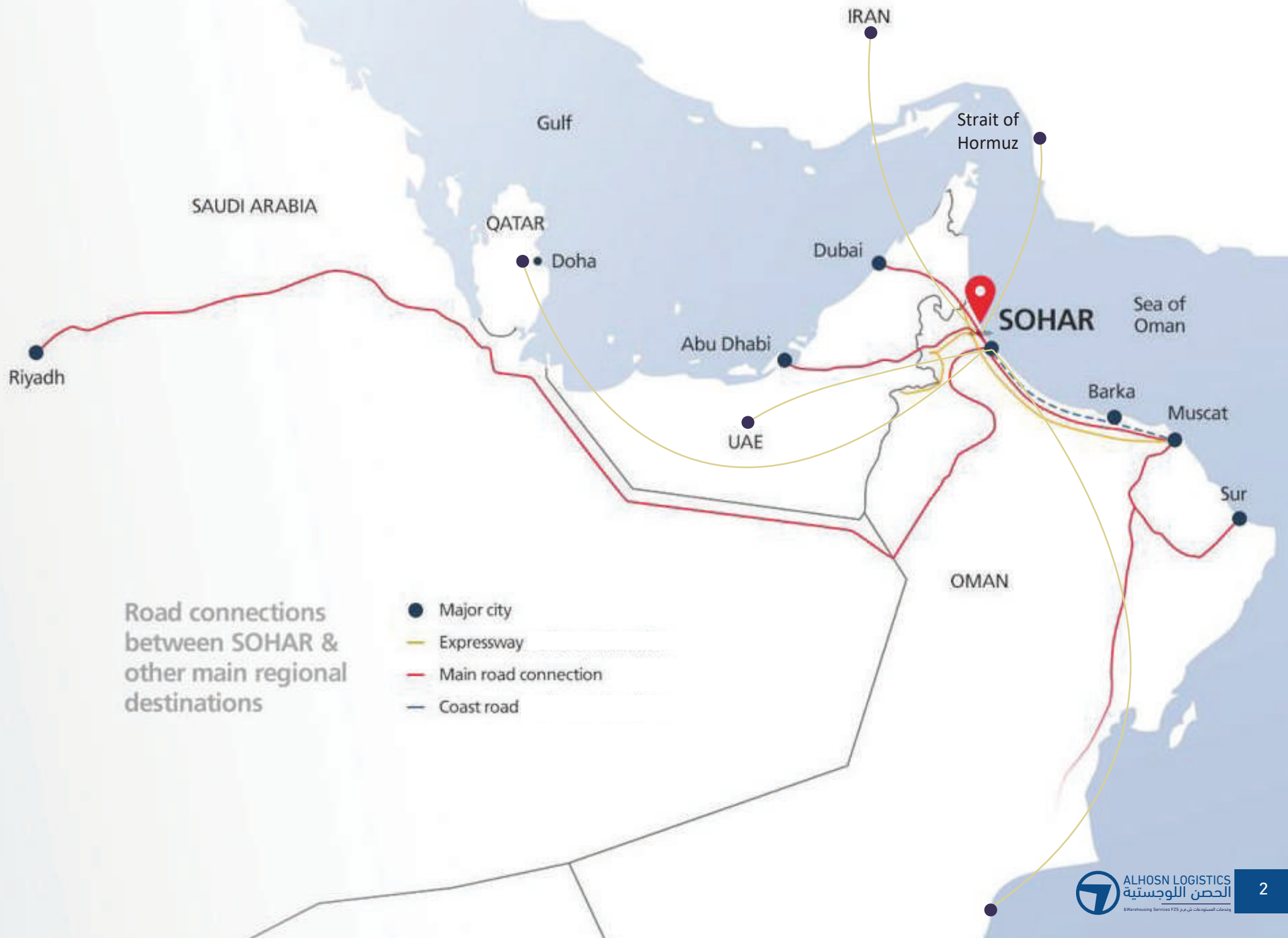
A person wearing a white cap and a grey jacket is seen from behind, standing in a large industrial warehouse. They are looking out through a massive open overhead door. The interior of the warehouse is brightly lit, and the floor is polished and reflective. The upper half of the image is overlaid with a blue gradient containing the title text.

Welcome To Our Company

Table of Contents

◆ SOHAR FREE ZONE MAP	P 01-02
◆ WHY SOHAR FREE ZONE ?	P 03-06
◆ AL-HOSN LOGISTICS	P 07
◆ WHAT WE OFFER?	P 08-09
◆ AL HOSN LOGISTICS MAP & LOCATION	P 10-12
◆ DRY WAREHOUSES	P 13-14
◆ FACILITIES LAYOUT(S) BLOCK DRY A-B	P15-18
◆ BLOCK C DRY-RIGHT WING	P 19
◆ BLOCK D DRY-LEFT WING	P 20
◆ COLD STORAGE	P 21-22
◆ FACILITIES LAYOUT(S) BLOCK DRY A-B	P 23
◆ SAFETY AND QUALITY MANAGMENT APPROACH	P 24-26
◆ CONTACT US	P 27







-  **ALHOSN LOGISTICS**
الحصن اللوجستية
خدمات المستودعات ش.م.ع. & Warehousing Services FZS

WHY SOHAR FREE ZONE ?

- 3 major clusters (Logistics, Petrochemicals,- Metals).
- Sohar Port and Freezone have already received foreign direct investments of \$26 billion.
- Positioned as a lower-cost, more efficient alternative to major UAE ports.
- Managed by Sohar Industrial Port Company, a joint venture between the Port of Rotterdam and the Sultanate of Oman.

من هنا البداية
It all starts here
سحر
SOHAR
المنطقة الحرة FREEZONE

WHY SOHAR FREE ZONE ?

1 more than
Million
tons
of cargo
each
week and growing



45 Million

tons iron
ore
imports
in four years



Container
terminal
is ready for



1.8 Million TEN

**US\$ 26
BILLION**



total investments

over
130,000 vehicles
handled a year



Orpic has increased
refining capacity to
198,000
barrel/day



\$6.0
billion liwa plastics
project under
construction



over
3,000
vessels
a year



3.5

Billion people
reach by
land, sea or air



100's

Kilometres of motorway
links to soudi Arabia and
UAE





Al-Hosn Logistics your strategic partner in Oman



Built in 2015 and located in Phase 1 of Sohar Free Zone, Al Hosn Logistics & Warehousing is spread over 4,500 hectares. Our facility is strategically located near the deep sea industrial port, airport as well as proposed terminal.

Our joint establishment is Al Hosn Investment Company, a closed joint-stock investment company established in 2007, and located in Muscat.

Focusing on investments in the Sultanate of Oman and other GCC countries, Al Hosn Investments targets vital economic sectors. These include healthcare, education, food security, real -estate, industrial, manufacturing, technology, and hospitality & tourism.

What We Offer? Inbound Services



Supply Chain Management



Custom Clearance(s)



Land Transportation



In-House Crating, Lashing and Packaging



Loading & Offloading Services

What We Offer?

Outbound Services

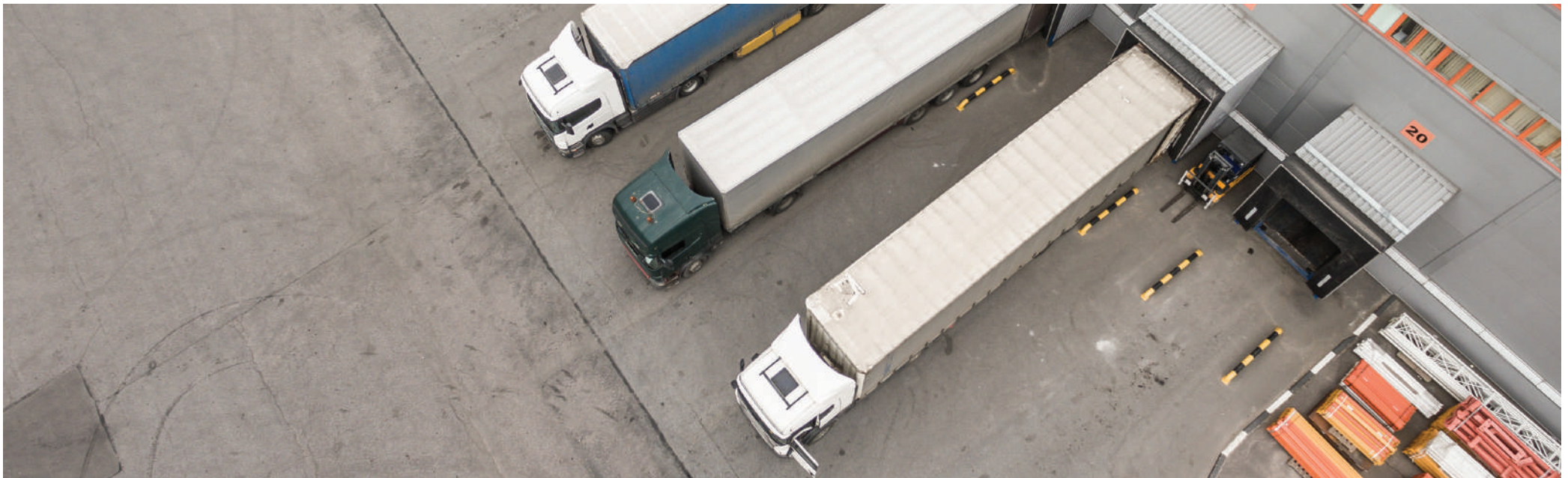


Other Services



AL Hosn Logistics Map & Location

AHLWS Plot Size / Area :	(as per given Plan) : Approximately 5 acers of Land
Total Built Up Area :	/ 21K + sqm / Warehousing Units Built-Up Area : 16,552 sqm
No of Warehousing Units :	55 Units l Sizes : Vary from 100 sqm to 3000 sqm
Business Centre Units :	Offices Space comprising 5 / 75 sqm Units Including . Fully Fledged Offices with Wifi / Tea & Coffee Pantry/Office Boy Services can be provided for big Tenants upon request @ minimal rate(s)
Cold Warehousing Units :	21 temperature Controlled Units / Sizes : Average 105 sqm each / Height : 7 m / Operational Area Height 10.2 m







Site Map

DRY WAREHOUSES

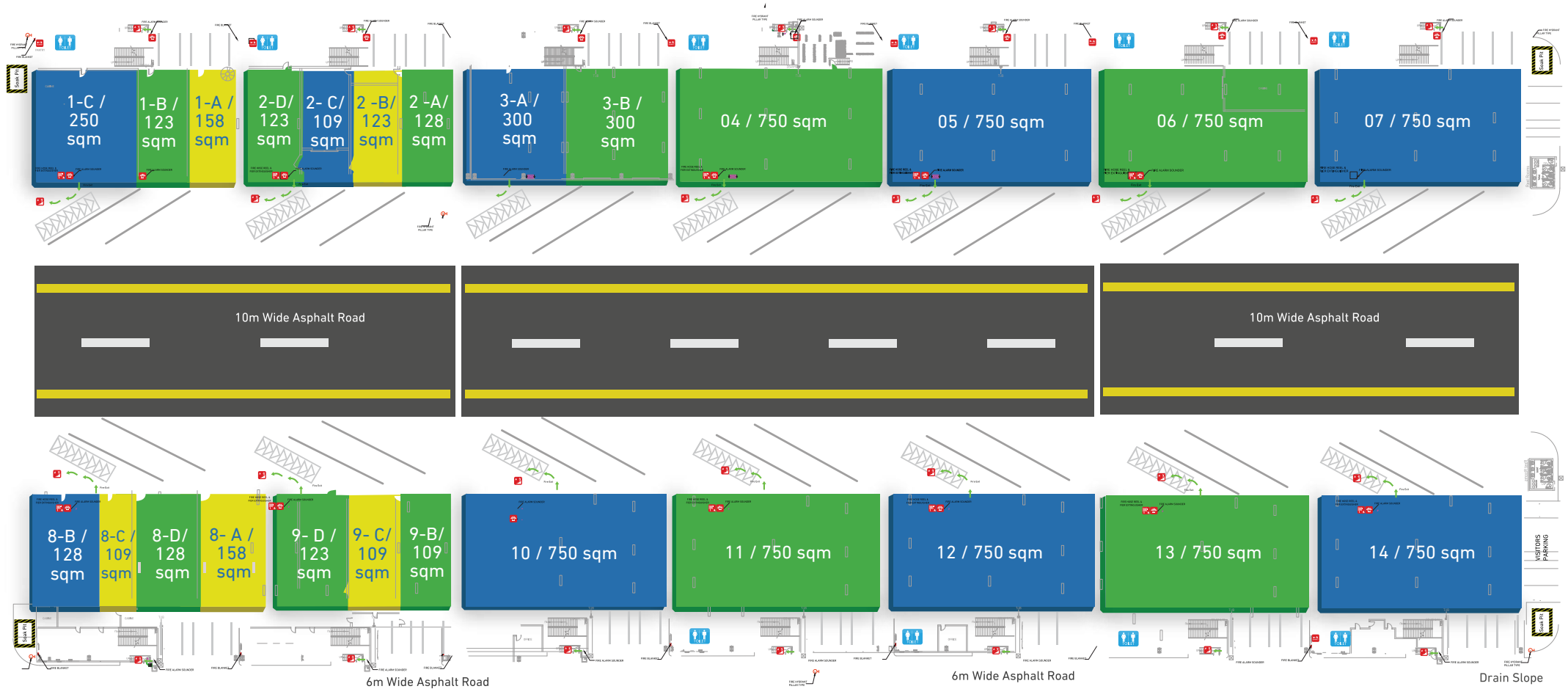


DRY WAREHOUSES

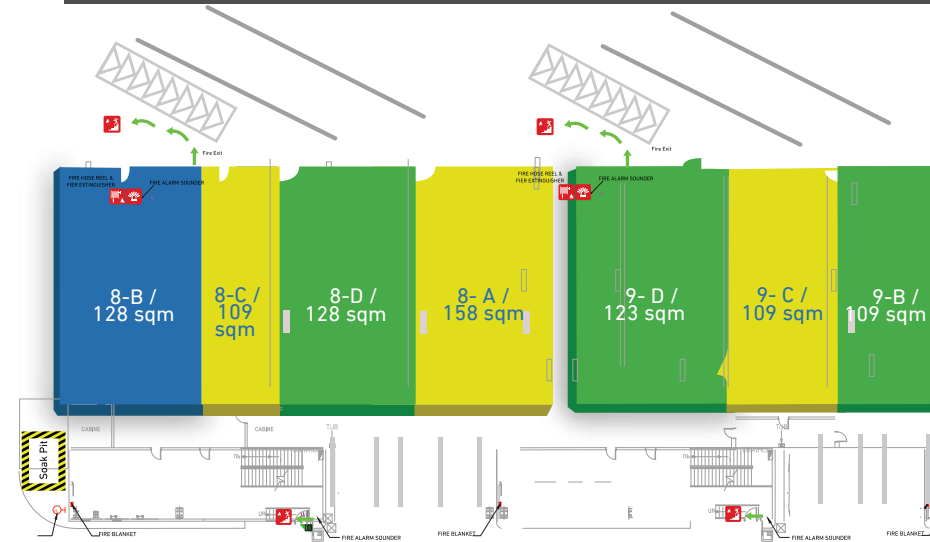
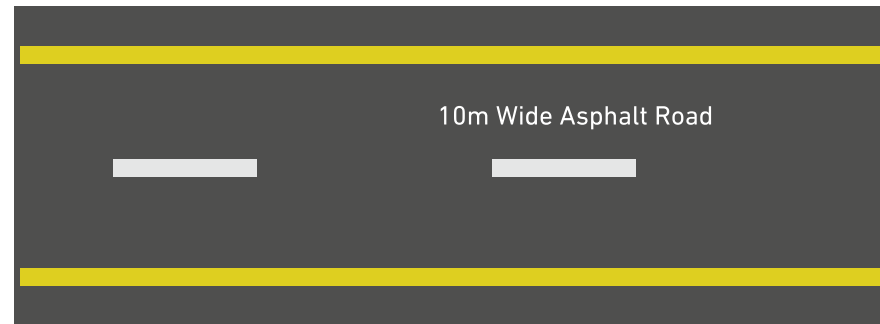
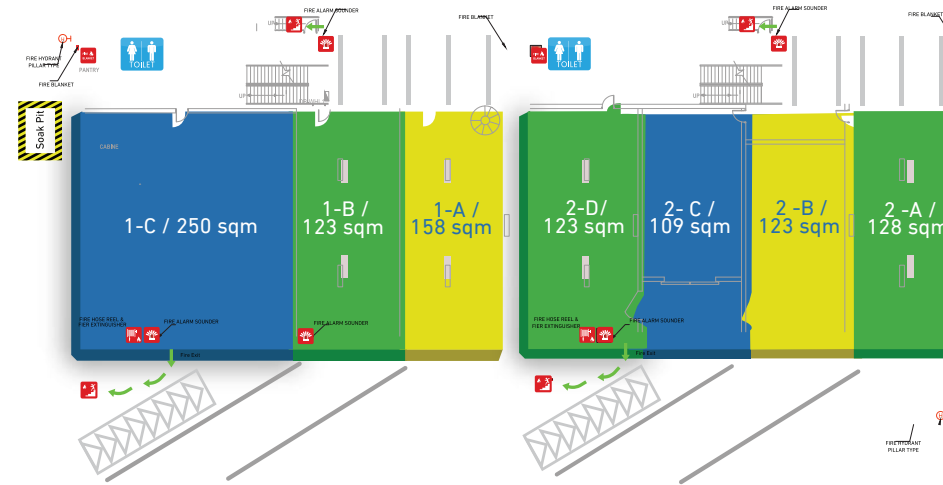


Facilities Layout(s) / Floor Plan(s):

Block Dry A-B

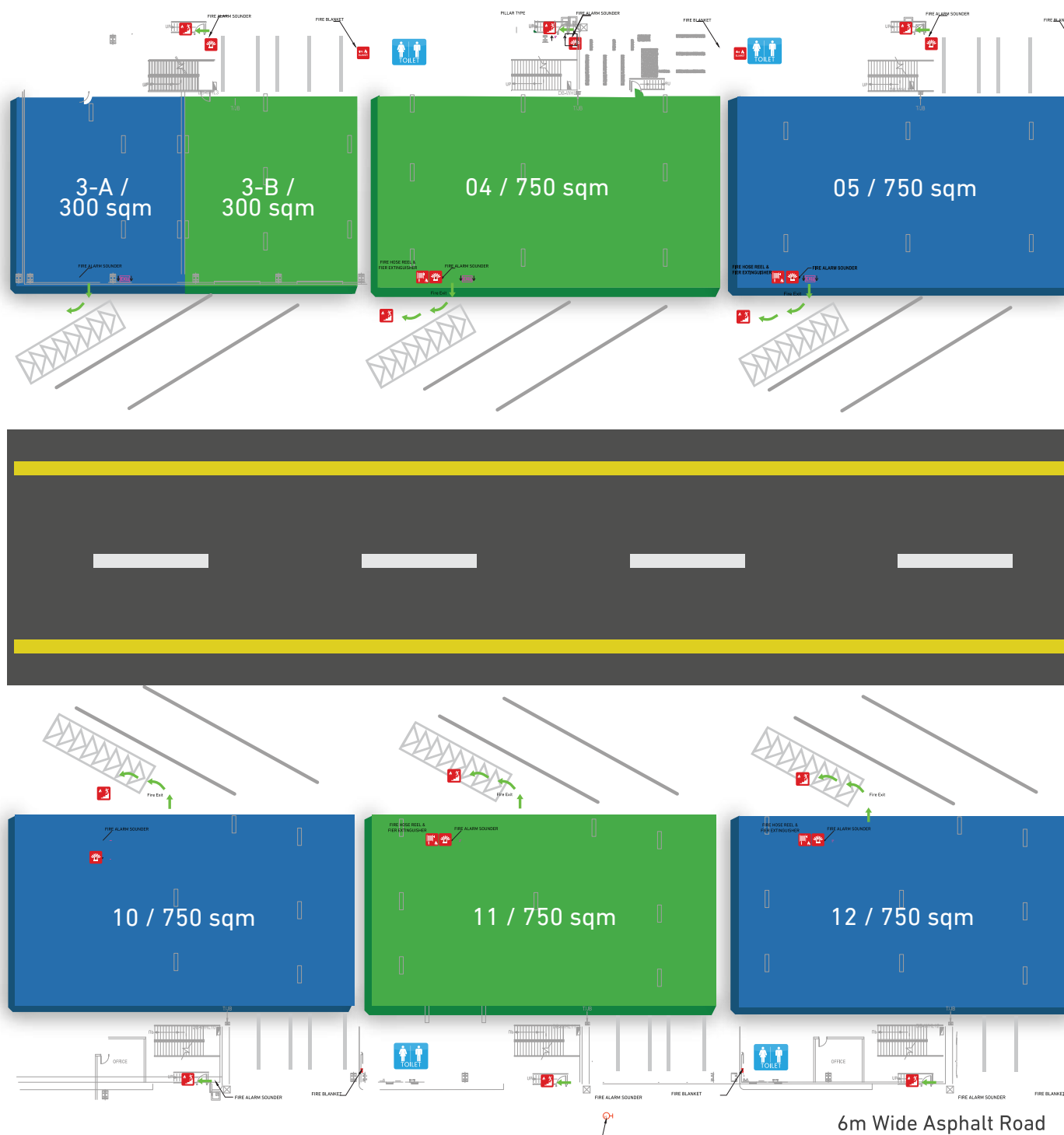


Block Dry A-B

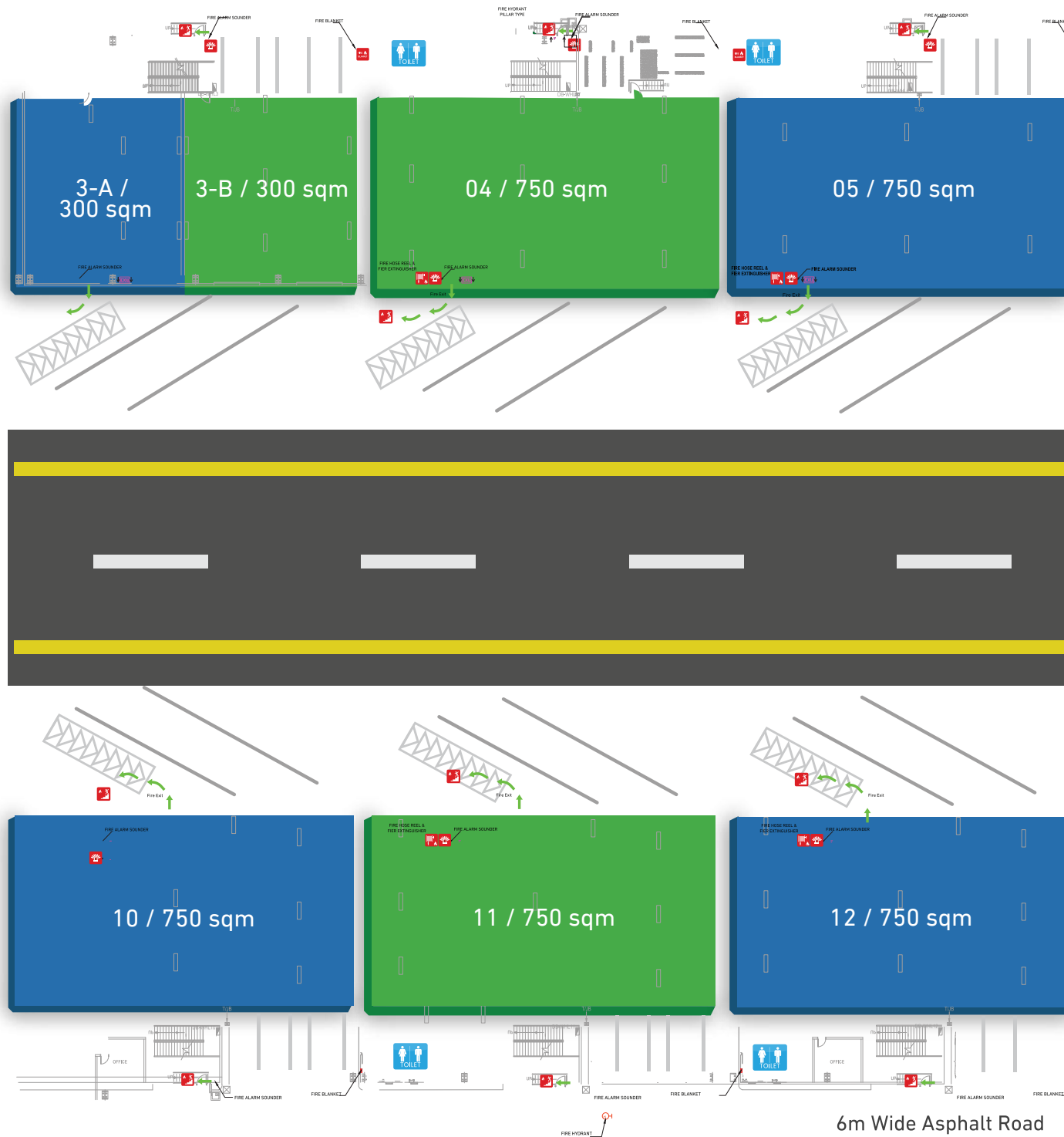


6m Wide Asphalt Road

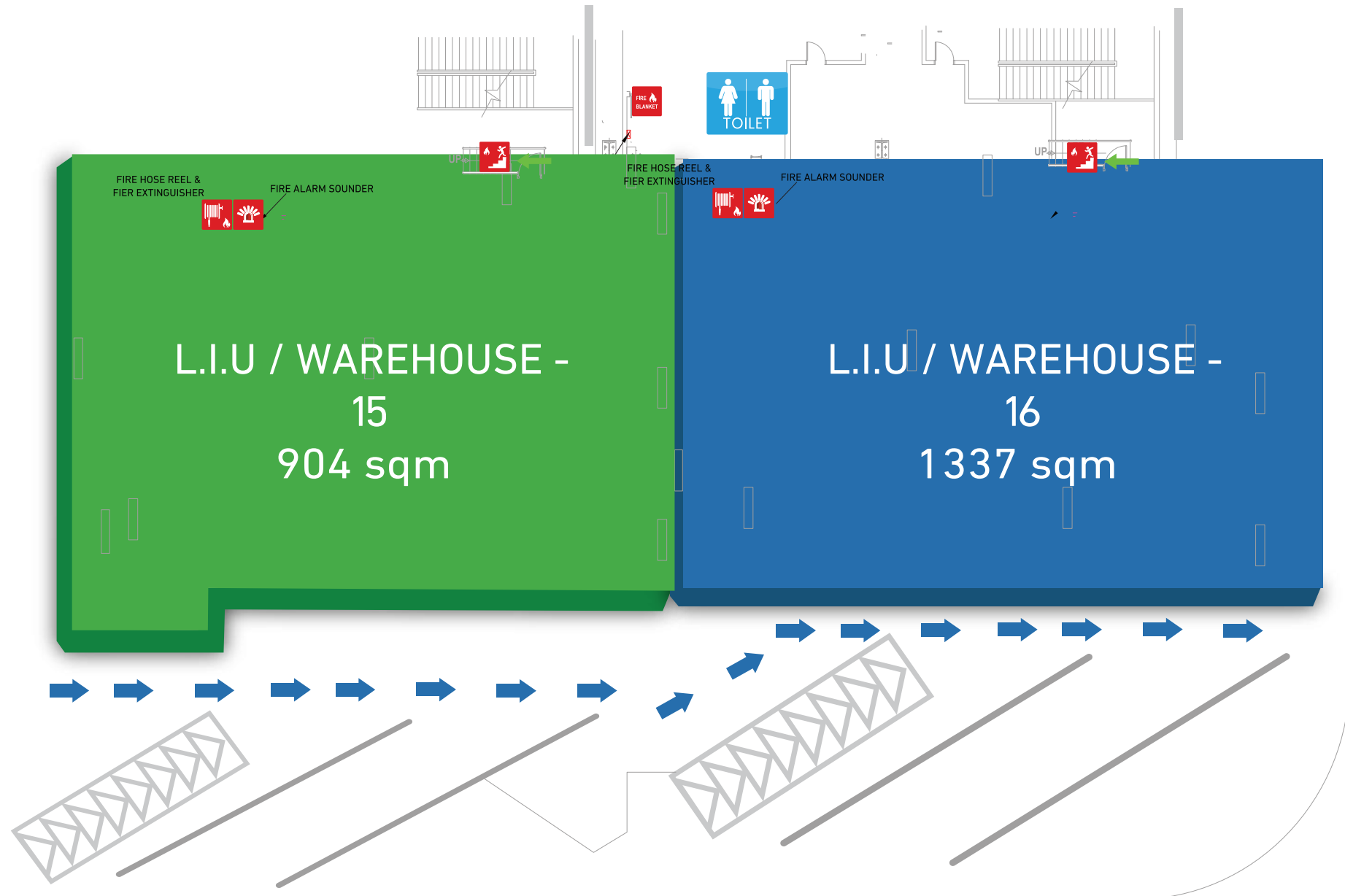
Block Dry A-B



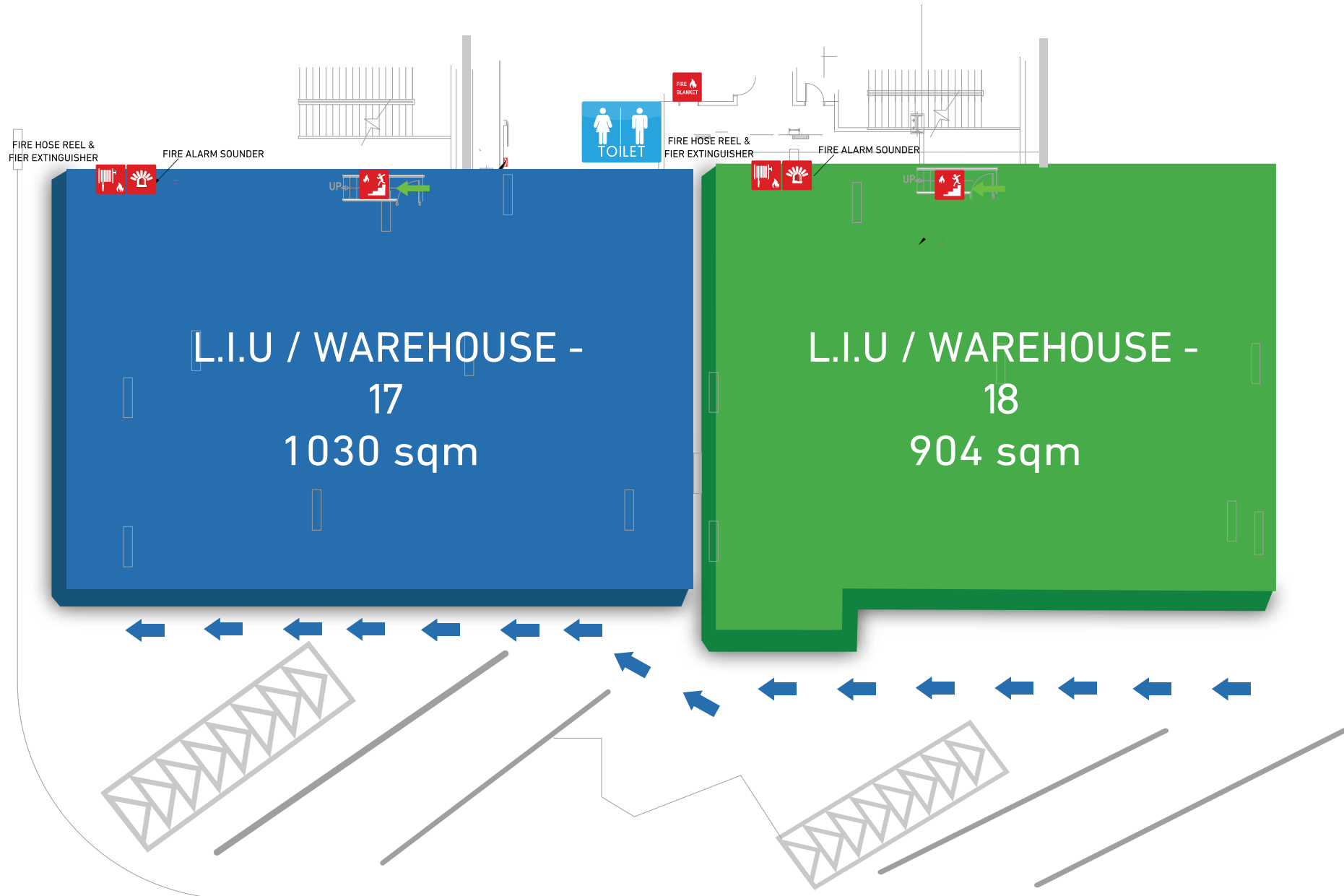
Block Dry A-B



BLOCK C DRY-RIGHT WING



BLOCK D DRY-LEFT WING



COLD STORAGE



COLD STORAGE



Facilities Layout(s) / Floor Plan(s):

Cold Storage D



Safety and Quality Management approach

From concept stage of warehouse construction to day to day operation, our utmost priority is Health & Safety our employee and protections of environment. Hence, we had incorporated lot of safety & security features at our warehouse facility and Practice HSE norms on day to day basis.







AUTO DOCK LEVELLER FOR FASTER TURN-AROUND & DOCK SHELTER FOR COLD CHAIN MAINTENANCE

CONTACT US

Headquarter in Muscat
Al Khuwair, P.O.Box 750, PC 130
Azaiba, Muscat, Sultanate of Oman.

Warehouse Location
Sohar Free Zone, Majan Industrial
Area, Sohar, Sultanate of Oman.

Phone:
Mobile: +968 93210440

Email:
hlwsc@alhosnoman.om



alhosnlogistics.om